



Contamination Switch EY-1356

Description:

The contamination switch series EY-1356 works as a warning element in hydraulic systems and gearboxes and has been developed by HYDAC ELECTRONIC to meet the special requirements of our customers.

The sensor detects and attracts metallic ferromagnetic particles in oil or in other hydraulic fluids. The accumulation of particles leads to a change of the ohmic resistance which has an effect on the switching signal. The contamination sensor thus provides an early warning of possible wear. Substantial damage on bearings and gear wheels, for instance, can therefore be avoided.

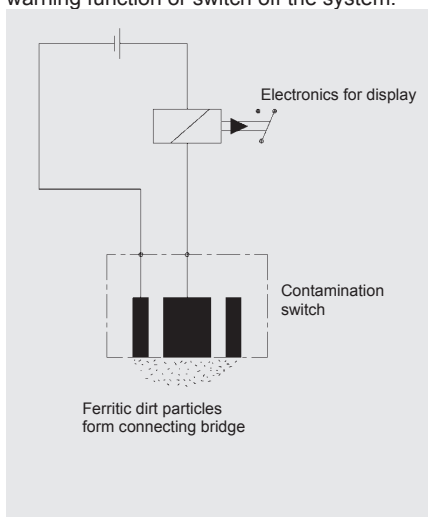
The sensor is available with different mechanical and electrical connections and can be integrated into almost any application.

Special features:

- Simple structure
- Robust construction
- Standard connection types

Functional principle / diagram:

The permanent magnet solenoid at the measuring surface of the contamination switch attracts the ferromagnetic contaminant particles from the passing oil. The increased accumulation of particles forms an electrical bridge between the permanent solenoid and the adjacent metal contact. The resulting switching signal can, for instance, activate a warning function or switch off the system.



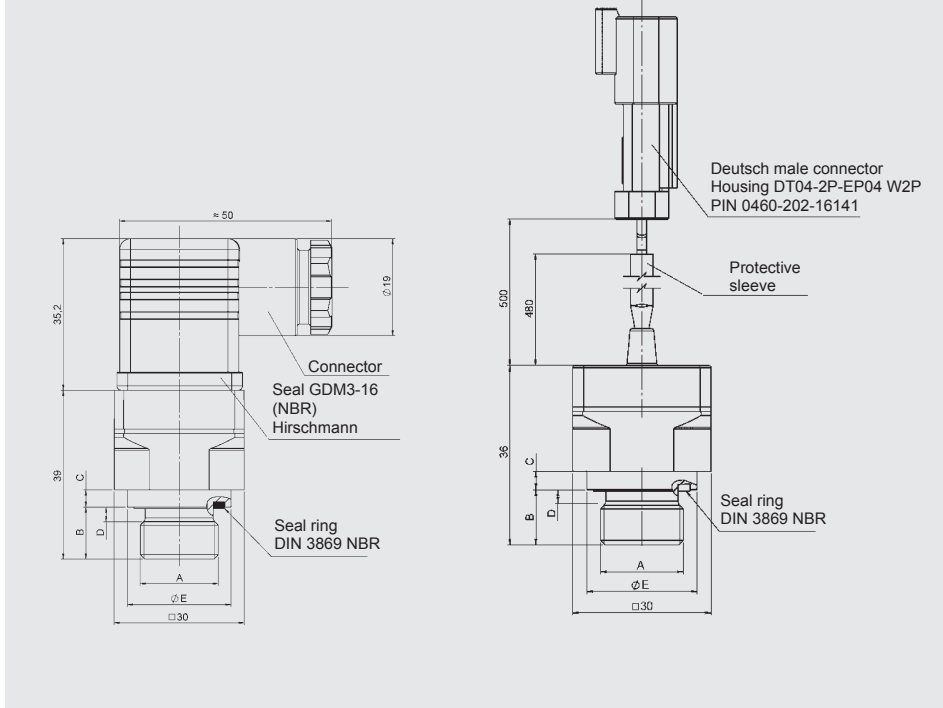
Technical data:

Maximum switching voltage	30 V DC
Maximum switching current	200 mA
Maximum oil pressure abs.	6 bar (16 bar)
Retention force of the permanent solenoid	~ 1.5 N
Ambient temperature	-25 °C to +90 °C
Protection class acc. to DIN 40050	DEUTSCH male connector DT04 2 pole IP67 Integrated connector acc. to EN175301-803/ ISO4400 IP65
Mating connector supplied	DEUTSCH male connector DT04 2 pole no Integrated connector acc. to EN175301-803/ ISO4400 yes
Max. tightening torque	M14x1.5 15 Nm M18x1.5 25 Nm M22x1.5 60 Nm M26x1.5 70 Nm M33x2 140 Nm
Installation position	We recommend an "upside-down" mounting position, i.e. connector or cable outlet pointing downwards.
The contamination switch is supplied with seal ring DIN 3896 NBR.	

Order details:

Electrical connection	Mechanical connection	Part number
Integrated connection plug acc. to EN175301-803/ ISO4400	M14x1.5	3252533
	M18x1.5	3305023
	M22x1.5	3731848
	M26x1.5	3731849
	M33x2	3252555
Strand DEUTSCH male connector DT04 2 pole	M14x1.5	3731852
	M18x1.5	3731853
	M22x1.5	3731854
	M26x1.5	3731855
	M33x2	3731856

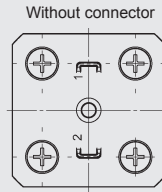
Dimensions:



Dim.	14	18	22	26	33	
A	M14x1.5	M18x1.5	M22x1.5	M26x1.5	M33x2	Other types of connection are available on request
B	12	12	12	12	12	
C	4	4	4	4	4.5	
D	3	3	3	3	4	
ØE	19	23.9	27	31.4	39.2	

Pin connections:

acc. to EN 175301-803

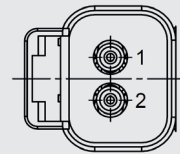


Pin

1	+U _B
2	-U _B

Reverse polarity permitted

Cable assignment for Deutsch DT04

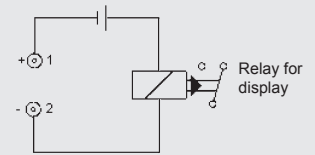


Pin

1	+U _B
2	-U _B

Reverse polarity permitted

Switching example:



Note:

The information in this brochure relates to the operating conditions and applications described.

For applications or operating conditions not described, please contact the relevant technical department.

Subject to technical modifications.

HYDAC ELECTRONIC GMBH
Hauptstr. 27, 66128 Saarbrücken
Germany
Telephone +49 (0)6897 509-01
Fax +49 (0)6897 509-1726
e-mail: electronic@hydac.com
Internet: www.hydac.com